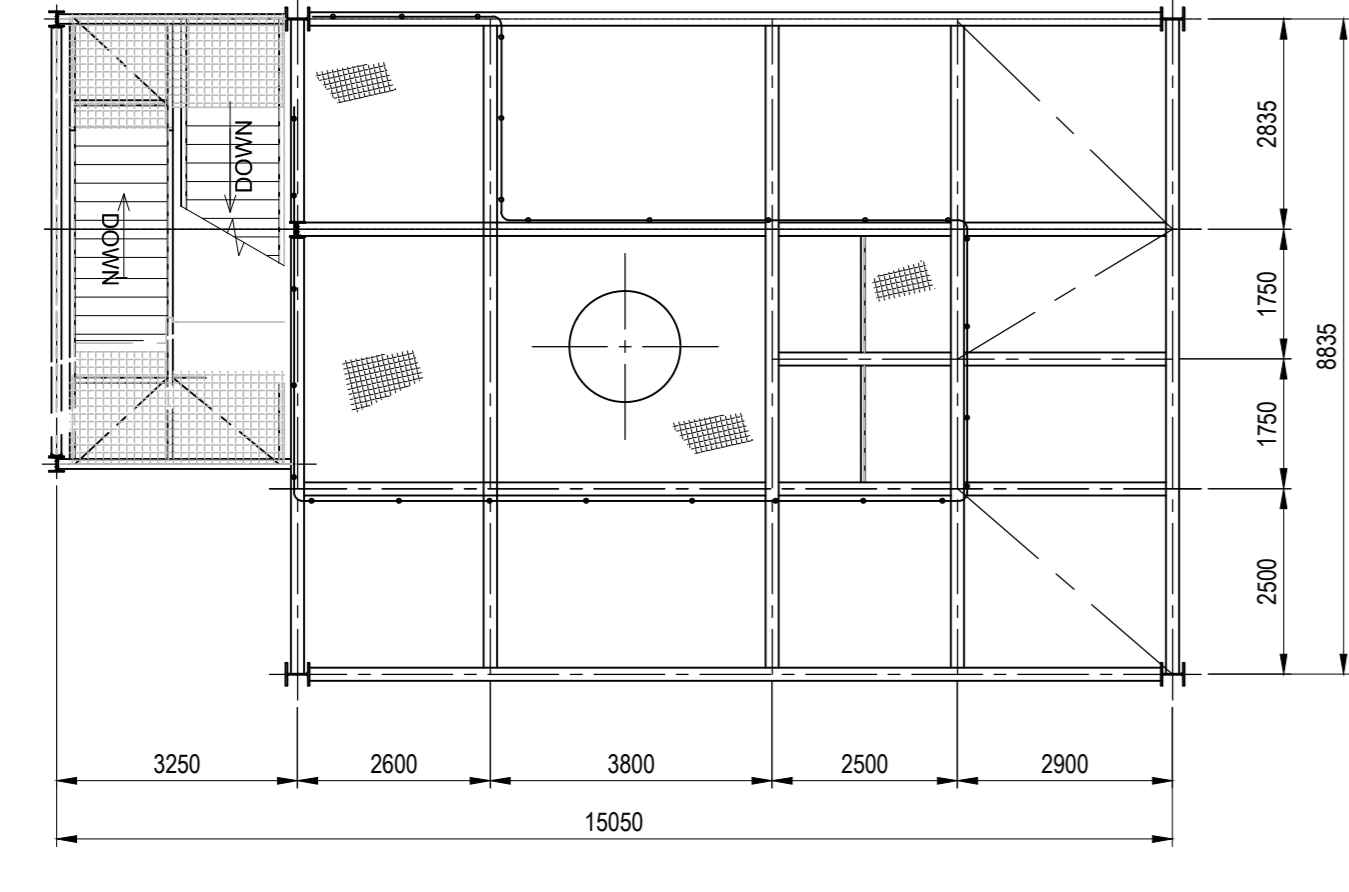
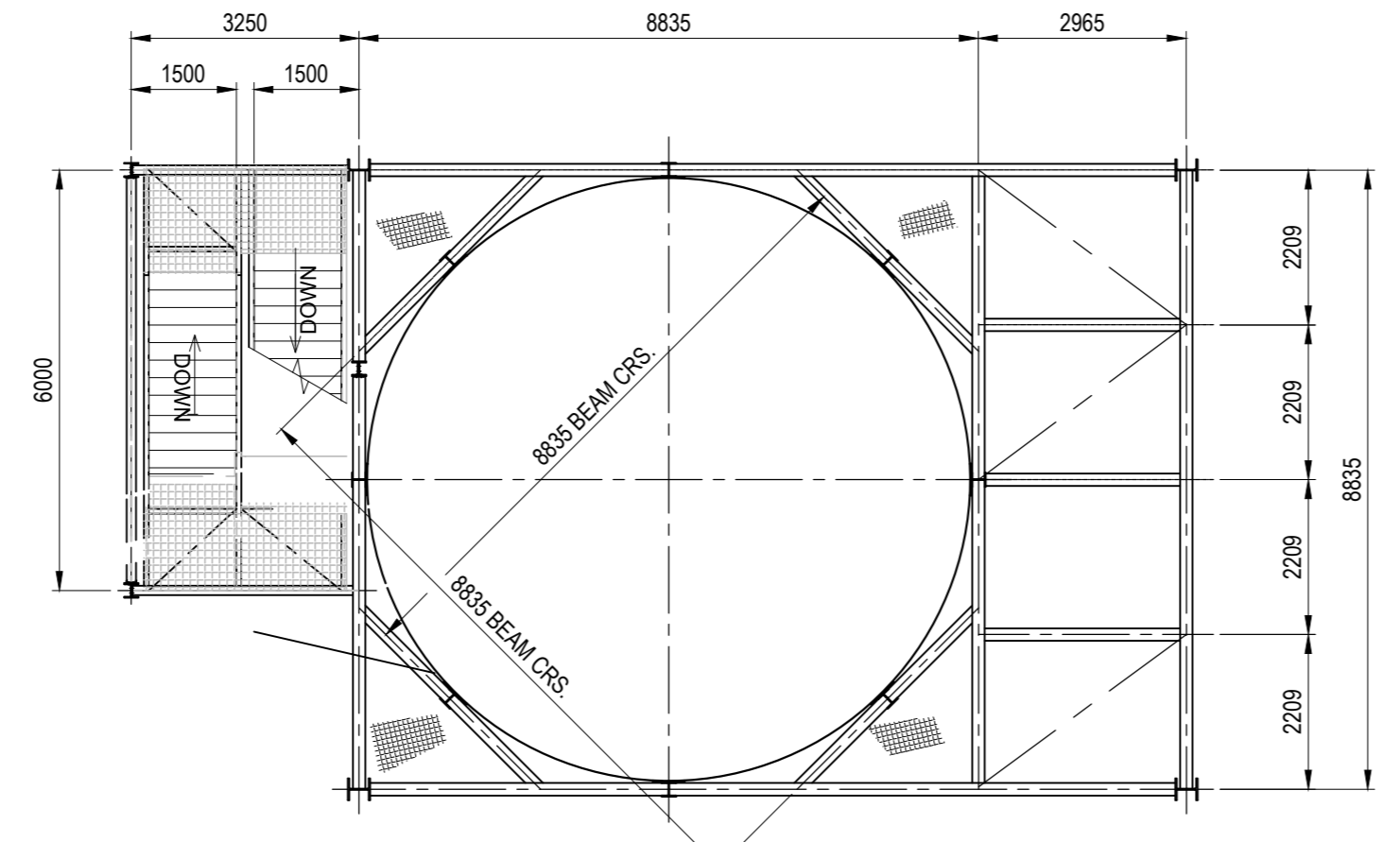
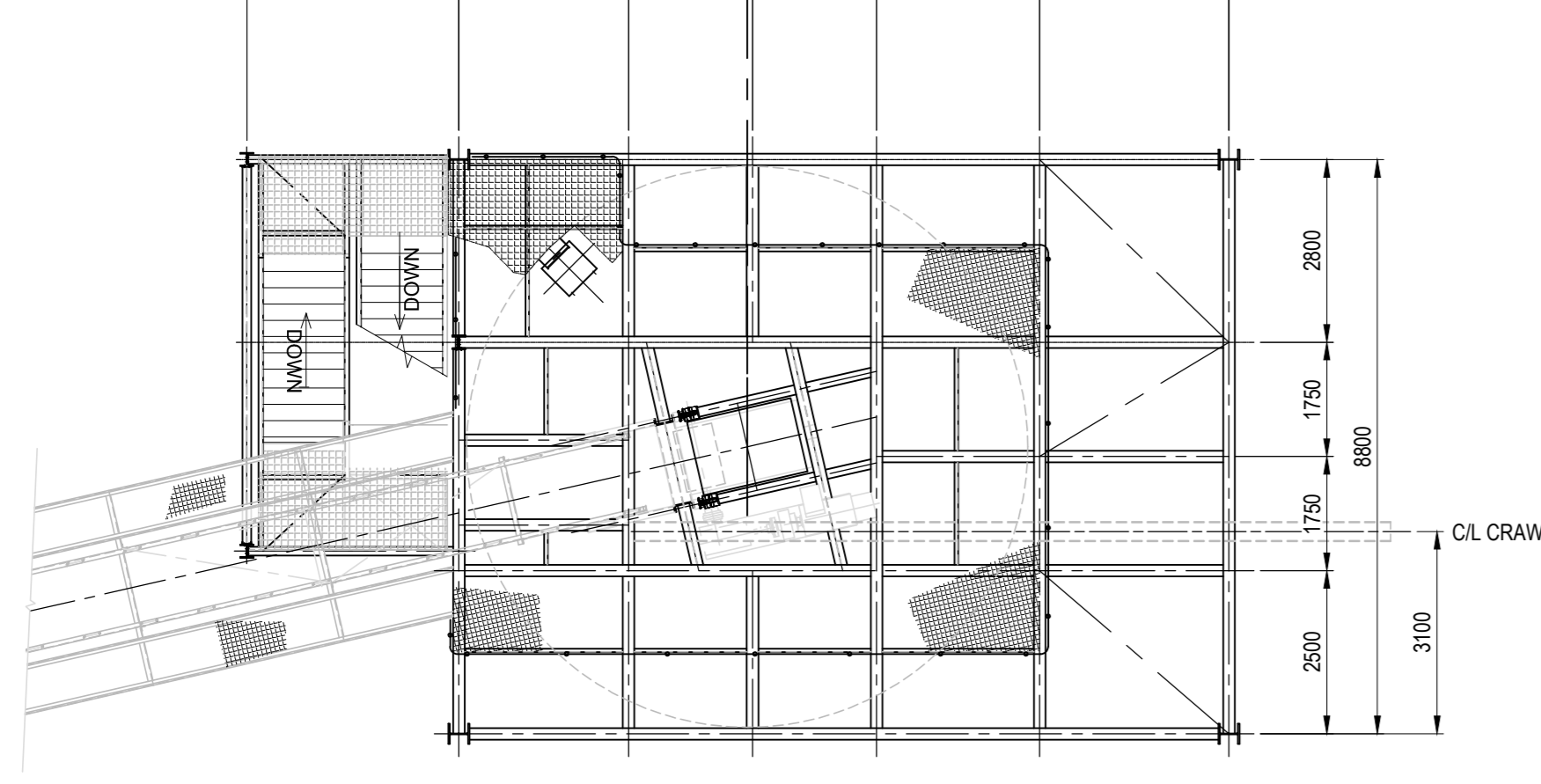
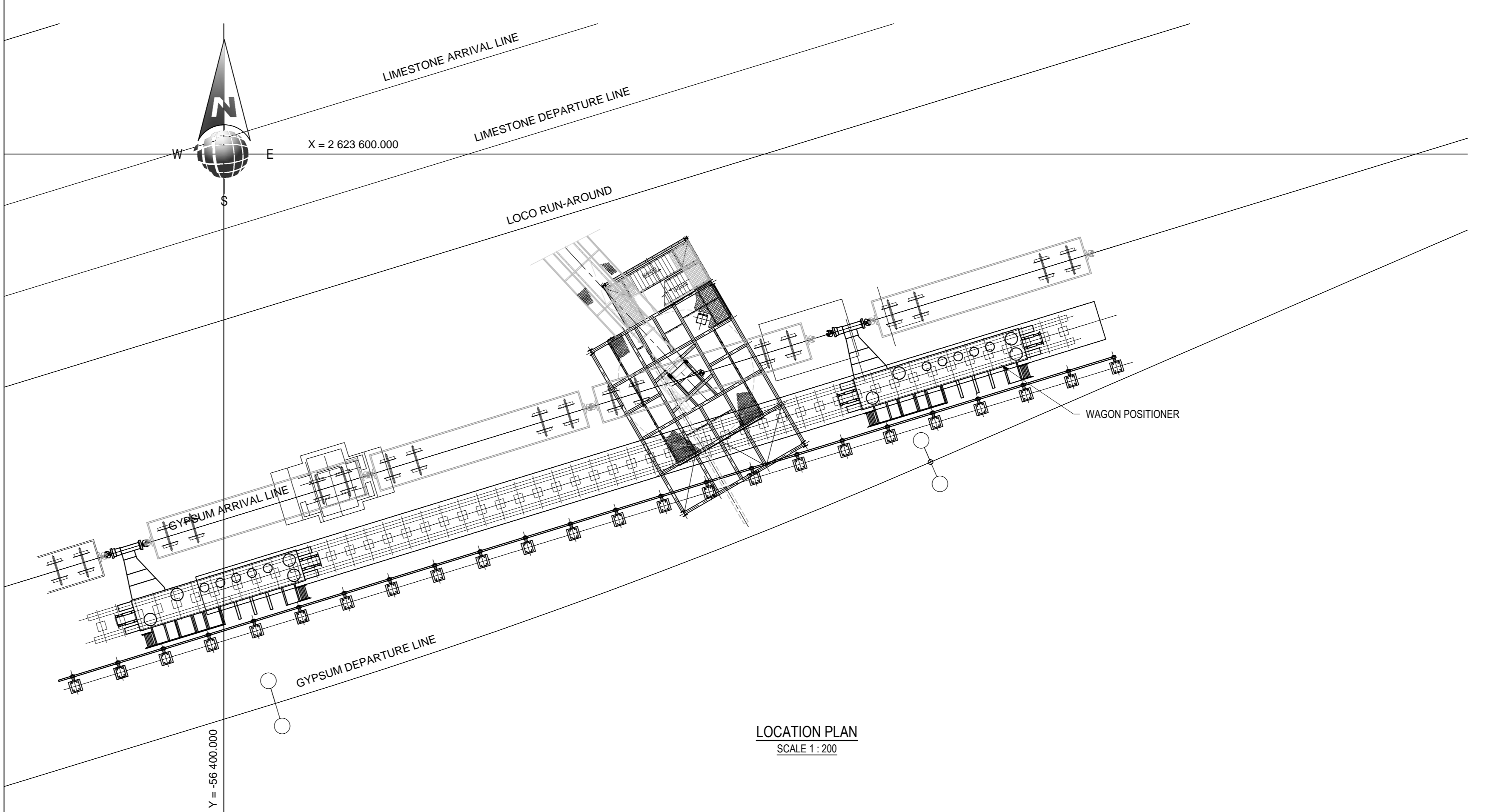
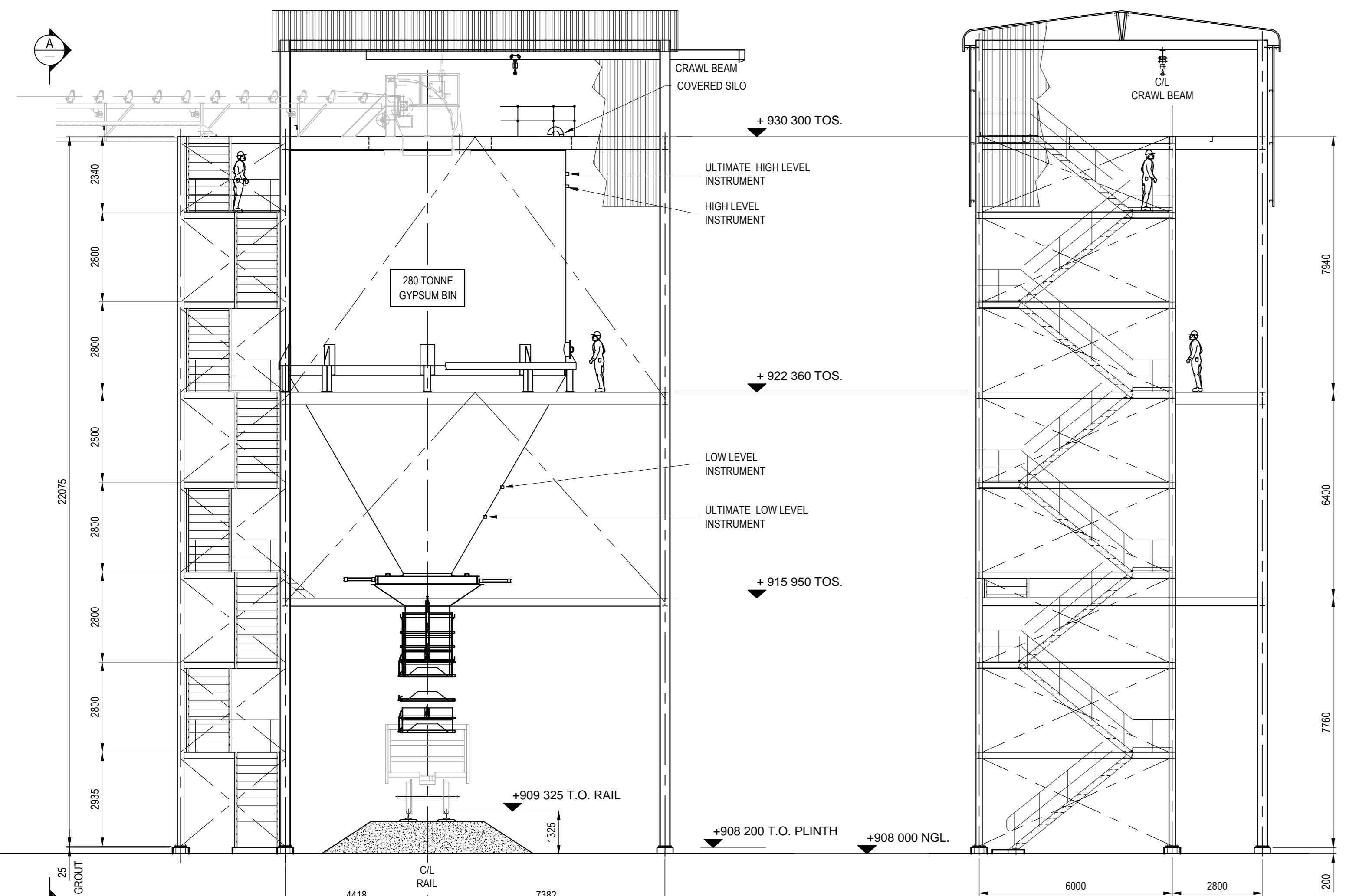


Conveyor Details	
<b>Conveyed material:</b>	
Conveyed material	Gypsum
Low Bulk Density	1000 kg/m³
High Bulk Density	1840 kg/m³
<b>Conveyor Parameters:</b>	
Design Capacity	700 tph
Belt Speed	2 m/s
Carry idler spacing	1.5 m
Return idler spacing	3 m
Carry idler details	35 degree trough angle, 127mm roller, 25mm shaft
Return idler details	2 roll V-return idlers, 127mm roller, 25mm shaft. 10 degree return idlers.
<b>Belt details:</b>	
Belt width	1050mm
Belt Class	EP 800
Carcass material	Fabric conveyor belt with moulded edges
Top cover thickness	5mm
Bottom cover thickness	5mm
Installed Motor Power	45 kW





03	28/8/15	ISSUED FOR TENDER	F.V.	D.B.	D.C.				
02	26/7/15	ISSUED FOR CLIENT APPROVAL	F.V.	D.B.	D.C.				
01	25/6/15	ISSUED FOR INFORMATION ONLY	F.V.	D.B.	D.C.				
1	24/6/15	INTERNAL REVIEW	F.V.	D.B.	D.C.				

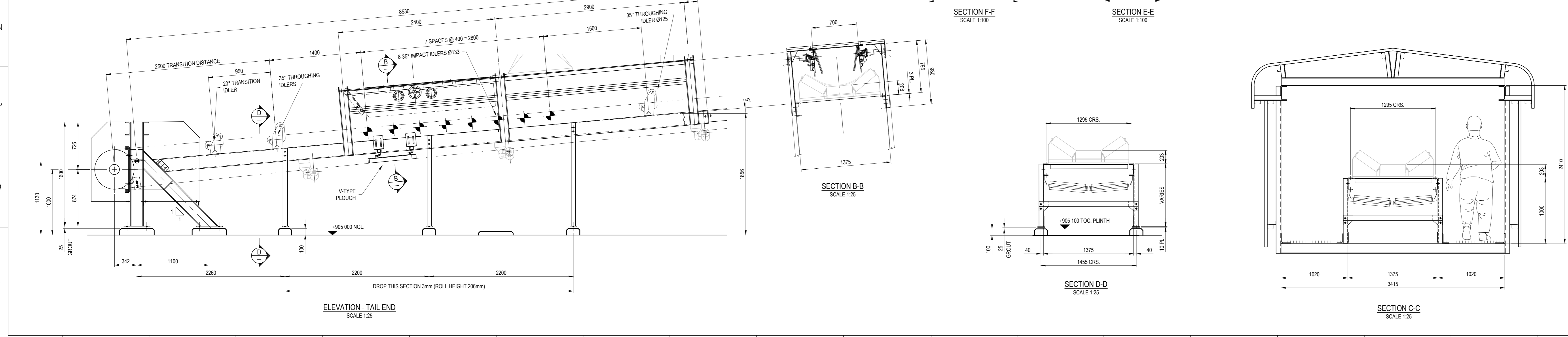
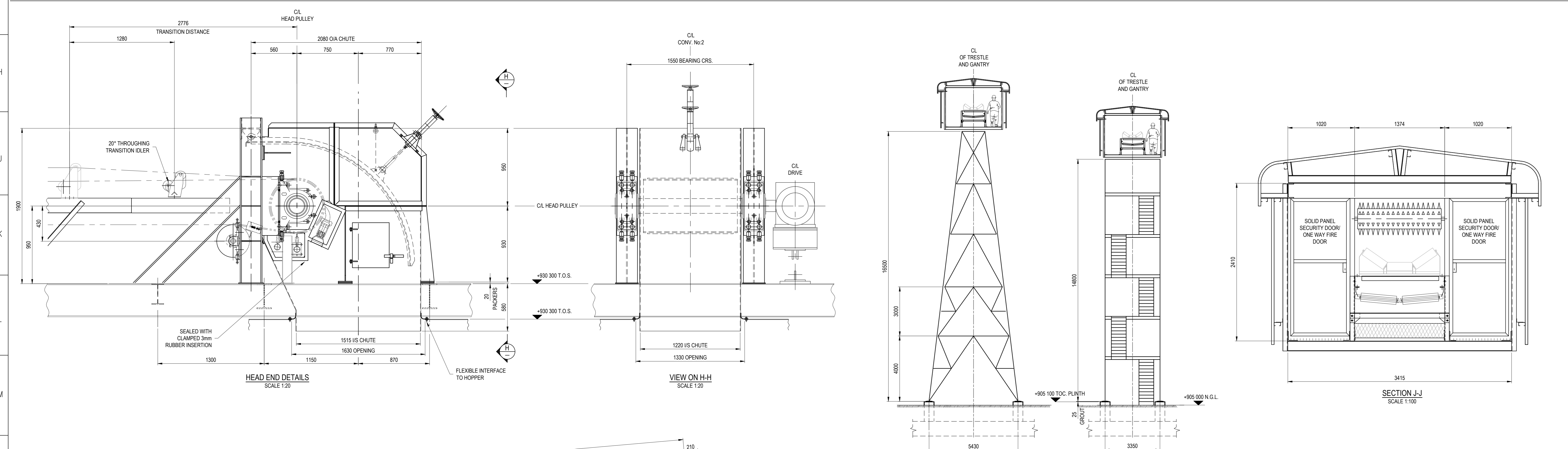
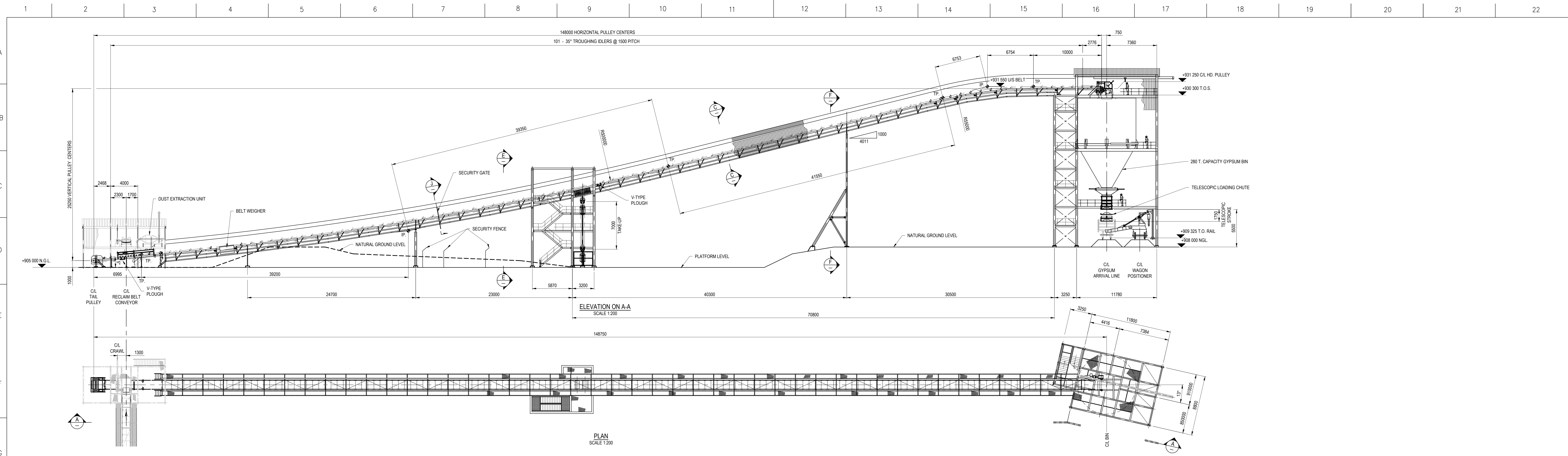
D.O.	REV	DATE	REVISION	REV. FOUND BY	APP. BY	AUTH. PERS. APP.	REFERENCE DRAWINGS

AUTHORIZED FOR ESKOM BY: _____ COORDINATION BY: _____ APPROVED BY: _____ D. Chappelow	ESKOM Eskom Holdings Ltd. 2002/301827/06	CONTRACTOR DRAWING NO: <b>1184-099-5-100-ME-0007</b> ESKOM DRAWING NO: <b>0.84/44350</b>	SHEET NO: 1 OF 1 REV: 0
--	--	---	-------------------------------

DRAWING CLASSIFICATION: CONTROLLED DISCLOSURE





Conveyor Details	
Conveyed material:	Gypsum
Conveyed material	Gypsum
Low Bulk Density	1000 kg/m <sup>3</sup>
High Bulk Density	1840 kg/m <sup>3</sup>
<b>Conveyor Parameters:</b>	
Design Capacity	700 tph
Belt Speed	2 m/s
Carry idler spacing	1.5 m
Return idler spacing	3 m
Carry idler details	35 degree trough angle, 127mm roller, 25mm shaft
Return idler details	2 roll V-return idlers, 127mm roller, 25mm shaft. 10 degree return idlers at initial incline and on horizontal section, 5 degree return idlers on second incline.
<b>Belt details:</b>	
Belt width	1050mm
Belt Class	EP 800
Carcass material	Fabric conveyor belt with moulded edges
Top cover thickness	5mm
Bottom cover thickness	5mm
Installed Motor Power	90 kW

D.O.	REV	DATE	REVISION	SPF CODE	F.V.	D.B.	D.C.
03	24/8/15		ISSUED FOR TENDER				
02	25/7/15		ISSUED FOR CLIENT APPROVAL				
01	25/6/15		ISSUED FOR INFORMATION ONLY				
1	24/8/15		INTERNAL REVIEW				

AUTHORIZED FOR ESKOM BY: [Signature]  
 COORDINATION BY: [Signature]  
 APPROVED BY: [Signature]  
 DESIGNED BY: [Signature]  
 CREATED BY: [Signature]  
 SCALE: 1:150 1:50

**CONTRACTOR DRAWING NO**  
**1184-099-5-100-ME-0006**  
**ESKOM DRAWING NO**  
**0.84/44349**

**ESKOM**  
 Eskom Holdings Limited  
 2002/01/05/06

**REFERENCE DRAWINGS**  
 MEDUPI POWER STATION  
 RAILWAY YARD  
 INCLINE GYPSUM BELT CONVEYOR  
 GENERAL ARRANGEMENT AND DETAILS

SHEET NO: 1 OF 1  
 REV: 0